

Teldat Secure IPSec Client - for professional application

## **Teldat IPSec Client**

- Support of Windows 8, 7, Vista and XP (32-/64-bit)
- IKEv1, IKEv2, IKE Config Mode, X-Auth, certificates (X.509)
- Integrated personal firewall
- Easy installation with wizard / assistant
- Support of IPSec over TCP, NCP Path Finder technology
- Integrated WLAN configuration
- 3G UMTS/4G LTE dialer with integrated budget manager

## Teldat IPSec Client

### Teldat Secure IPSec Client - for professional application

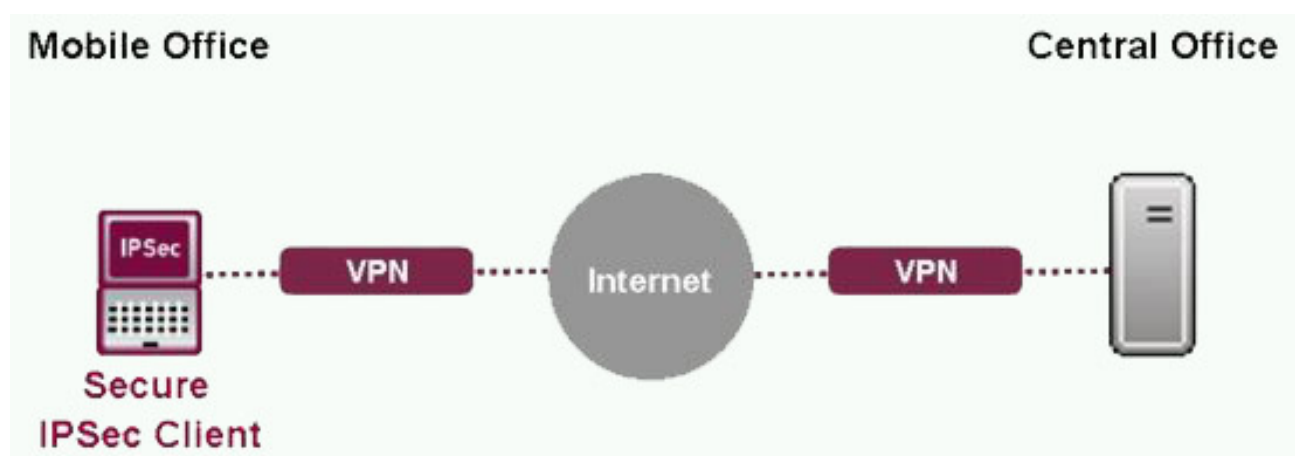
The Teldat Secure IPSec Client is a powerful IPSec software application for professional remote access VPN solutions. It enables secure remote access to company data for mobile employees and telecommuters.

#### Product description

The Teldat Secure IPSec Client supports the Microsoft 32-bit and 64-bit Operating Systems Windows 8, Windows 7, Vista, XP and it enables secure remote access to company data. Based on IPSec standards and in combination with VPN Gateways of Teldat the Teldat Secure IPSec Client realizes secured tunnels for access to the central data network. The integrated Personal Firewall ensures the protection of the end user system.

A wizard leads through the installation and a configuration assistant helps to create a precise connection profile. Is the VPN connection established, the user applies to the applications in familiar manner, without thinking about security functions. Furthermore the graphical user interface informs about the current VPN tunnel connection status.

Featured with comprehensive security functions, the Secure IPSec Client is an ideal solution for home offices or mobile employees with a need for a secured remote access to delicate central company data.

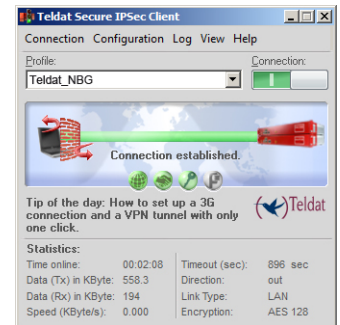


## Features

The Teldat Secure IPSec Client is applicable in any VPN environments. It allows communication between VPN Gateways of several manufacturers using the standard compliant IPSec implementation. Furthermore the Teldat Secure IPSec Client supports all current operating systems. Additional features admit the implementation of integrated remote access VPN solutions.

The features (amongst others):

- Dial-In via different media types (LAN, WLAN, 4G-LTE, 3G-UMTS, xDSL, ISDN) and automatic assortment of the necessary media type
- Compatibility with VPN gateways of different manufacturers
- Supports Windows 8, Windows 7, Vista, and Windows XP (32- and 64-bit)
- Adoption of strong authentication and encryption method
- Support of IPSec over TCP, based on the NCP Path Finder technology
- Integrated Personal Firewall
- Prioritization of VoIP data
- Automatic Hotspot identification
- Transparent authentication at the access point via predefined login data
- Integrated WLAN configuration
- prevention for misuse of dial applications (0190 and 0900)
- Extensive IPSec functions - Dead Peer Detection, NAT-Traversal, IKE Config Mode, IKE X-Auth
- Ease of use (graphical user interface)



## Variants

<b>IPSEC-VPN-CLIENT5</b> (80512)	5 x Teldat Secure IPSec Clients, supports Windows 7 □ (32/64 Bit)
<b>IPSEC-VPN-CLIENT10</b> (80513)	10 x Teldat Secure IPSec Clients, supports Windows 7 □ (32/64 Bit)
<b>IPSEC-VPN-CLIENT1</b> (80511)	1 x Teldat Secure IPSec Client, supports Windows 7 □ (32/64 Bit)

## Features

### Operating System / Languages

Supported Operating Systems Windows 8, Windows 7, Windows Vista and Windows XP

Supported Languages English, French, Spanish and German

### IPSec Features

IPSec VPN IPSec RFC 2401-2409

## IPSec Features

IPSec Algorithms	AES (128,192, 256 Bit), 3DES (168 Bit), Blowfish (128-448) RSA (1024 or 2048)
IPSec Hashes	MD-5, SHA-1, SHA-256, SHA-384, SHA-512 and DH-Groups 1, 2, 5, 14-18
IKE Versions	IKEv1 and IKEv2 - with Pre Shared Keys and certificates (X.509)
IPSec IKE Config Mode	IKE Mode Config allows the dynamic assignment of client IP configuration (IP address, DNS and WINS servers)
IPSec IKE XAUTH	IKE Protocol Extended Authentication for extended user authentication, necessary or OTP (One Time Password, inclusive Smart Cards and Token) solutions
IPSec Dead-Peer-Detection	Provides continues connection monitoring
IPSec NAT-T	Support of NAT Traversal (NAT-T) for connections over routers with activated NAT
IPSec Certificates (PKI)	Support of X.509 certificates
IPSec PKI Standards	Entrusts Smart Cards: PKCS#11, for Encryption Token TCOS 1.2 and 2.0, Smart Card Reader Interfaces CT-API and PC/SC, PKCS#12, CSP
IPSec Certificate Revocation List	EPRL - End-entity Public-Key Certificate Revocation List (CRL), CARL - Certification Authority Revocation List, (ARL), OCSP - Online Certificate Status Protocol
IPSec over TCP (NCP Path Finder)	IPSec Fallback to TCP, e.g. 443 (HTTPS), based at the NCP Path Finder technology, to overcome firewalls with activated IKE Port 500 filters

## Security

Stateful Inspection Firewall	Stateful Inspection Firewall for IPv4 and IPv6, directional controlled packet filter with controlling of the connection state, application filtering
Friendly Net Detection	Automatic detection of unsecure and secure network and dependent of that an activation and deactivation of firewall rules
Password-Protection	Password protection for profile management and configuration for avoid unauthorized access to configuration parameters.

## Features

Media Type	LAN, WLAN, XDSL, ISDN, GSM, UMTS, LTE, inclusive automatic type of media detection
DynDNS	Query of the current IP address via a public DynDNS Server
HotSpot	Automatic Hotspot detection

## Administration / Management

Configuration	Easy to use due to graphical user interface with build in installation wizard
WLAN Configuration	Integrated WLAN configuration
Integrated Dialer (RAS)	Integrated Dialer for ISDN, GSM, UMTS and LTE with build in budget manager
Client Monitor	Graphical User Interface for connection control and monitoring
System Logging	Easy diagnosis thanks to integrated advanced logging

## Accessoires

Software Licenses	
<b>IPSEC-CLIENT1-UPDATE</b> (80516)	Update Teldat Secure IPSec Client for 1 client for two major releases
<b>IPSEC-CLIENT5-UPDATE</b> (80517)	Update Teldat Secure IPSec Client for 5 clients for two major releases
<b>IPSEC-CLIENT10-UPDATE</b> (80518)	Update Teldat Secure IPSec Client for 10 clients for two major releases