

Application Sheet

Mobile bintec HotSpot – UMTS HotSpot with RS120wu

The bintec HotSpot is designed to provide Internet access for guests in hotels, cafés, restaurants.

The bintec HotSpot solution, i.e. mobile Internet access, typically consists of a locally installed bintec RS232bw, which serves as a HotSpot gateway. To satisfy legal requirements, the solution is supplemented with a central unit, the bintec HotSpot server that automatically manages the Internet access of the gateway. The HotSpot server takes over administration of the HotSpot participants and stores all data.

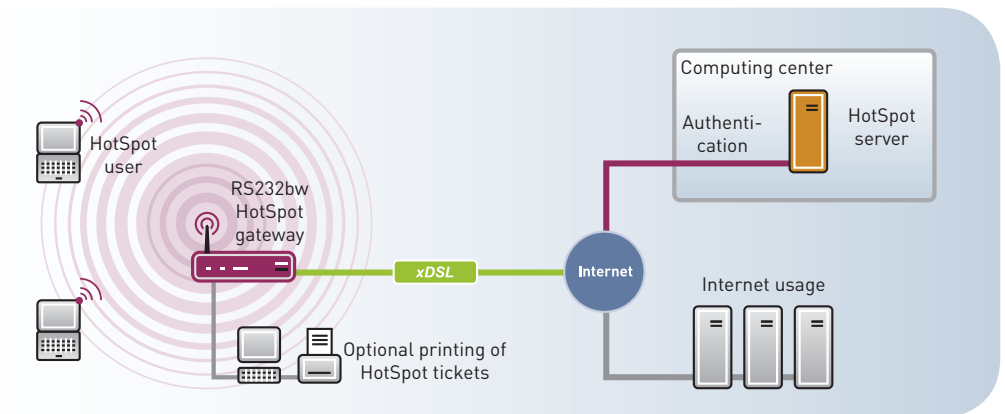
Benefits / Highlights:

HotSpot Gateway:

- ▶ HotSpot as fee based service or as free of charge service
- ▶ Automatic activation by operation as free of charge HotSpot
- ▶ Simple user login via web browser
- ▶ Multilingual, for your international guests
- ▶ No multiple registrations
- ▶ No expiry of time credits after log-off or if the connection is interrupted
- ▶ Redirecting to an operator-specific log-in page for initial access*

HotSpot Server:

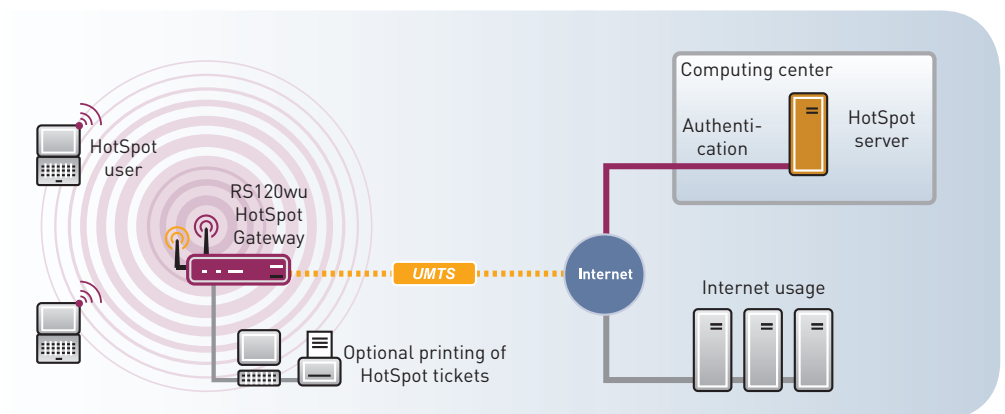
- ▶ Several locations per customer (branch support)
- ▶ Several tariffs per customer (e.g. day, hour, volume)
- ▶ Manual generation of HotSpot tickets, generation of HotSpot vouchers
- ▶ PayPal interface
- ▶ Compliance with legal requirements, the system fulfils the data retention law



The classical bintec HotSpot solution operates with a DSL connection.

Solution:

The solution of the „mobile bintec HotSpot“ enables in opposite to the classical solution also the HotSpot operation without a wire-connected Internet access. This solution fits perfect to indoor or outdoor events, to provide guests a temporarily Internet access. The bintec RS232bw will be replaced by bintec RS120wu. This router has an integrated UMTS/HSDPA modem, which establishes a wireless Internet access. In combination with the bintec HotSpot functionality the result is a mobile and above all a legally compliant HotSpot.



Mobile bintec HotSpot solution with an UMTS connection

Application Sheet Mobile bintec HotSpot – UMTS HotSpot with RS120wu

HOTSPOT GATEWAY:

bintec RS120wu

- ▶ bintec RS120wu (Art. no. 5510000220)
- ▶ Router with integrated UMTS modem and 11n WLAN



WLAN ACCESS POINTS:

bintec W1002n

Access point for professional construction of a WLAN infrastructure behind the HotSpot gateway if a larger area is to be covered with Internet access.

- ▶ bintec W1002n (Art. no. 5510000165)
- ▶ IEEE 802.11a(h)/b/g/n
- ▶ Use of separately positioned antennas possible
- ▶ PoE-capable (IEEE 802.3af)



ANTENNAS:

Indoor Mimo ceiling antenna

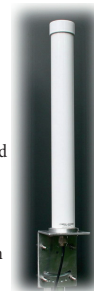
This antenna can be separately positioned for 2x3 Mimo 802.11n access points (e.g. W1002n) as an inconspicuous ceiling antenna.

- ▶ ANT Ceiling-Mimo-2G (Art. No. 5510000209)
- ▶ 2.4 – 2.5 GHz
- ▶ 9 - 10 dBi gain
- ▶ IP20 Indoor
- ▶ 13.3 x 6.5 cm
- ▶ Scope of delivery:
2 x 2m connection cable



UMTS antenna for RS120wu

- ▶ ANT-Omni-3G-UMTS (Art. no. 5500000853)
- ▶ Omni-directional multi-band GSM-UMTS (3G)
- ▶ 860 – 960 MHz and 1710 – 2170 MHz
- ▶ 4.6 – 6,3 dBi gain (addicted to frequency)
- ▶ Outdoor and indoor
- ▶ 50 x 5,5 cm
- ▶ Incl. mounting kit and 5 m cable for outdoor usage



Home Compenser

Send and receive signal booster

- ▶ Home Compenser (Art. no. 5500000852)
- ▶ Suits for GSM 900/1800 and UMTS
- ▶ Supported transfer modes: GPRS, HSCSD, EDGE; UMTS, HSDPA, HSUPA
- ▶ Maximum transmission power:
GSM 900: 2 W (33 dBm)
GSM 1800: 1 W (30 dBm)
UMTS: 0,25 W (24 dBm)



SOFTWARE:

HotSpot Licenses

HotSpot solution hosting fee

- ▶ For 2 years and 1 locations
HotSpotHosting 2yr 1 location (Art. no. 5500000861)
- ▶ For 1 year and 1 location
HotSpotHosting 1yr 1 location (Art.-Nr. 5510000189)

Content Filter

All outgoing Internet requests are classified and allow reliable filtering of undesirable content, such as sexual content.

	Cobion Content Filter Small	UTM1100 Content Add-on 1y	UTM1100 Content Add-on 2y	UTM1100 Content Add-on 3y
Art. no.	80551	5510000124	5510000128	5510000132
Content filter for	RS232	UTM1100	UTM1100	UTM1100
License for	1 Year	1 Year	2 Years	3 Years

SUPPLEMENTARY COMPONENTS:

packetalarm UTM1100

Unified Threat Management system to protect the entire LAN. packetalarm UTM identifies diverse attacks and threats in real-time and purposefully blocks hazards.

- ▶ Art. No. 5510000014
- ▶ 4 x 10/100 Mbps Ethernet interfaces



bintec Switches

Construction of a LAN infrastructure behind the HotSpot gateway

- ▶ Supply of access points by means of PoE (only S128p, S1224p), no additional power supply unit required



Funkwerk Enterprise Communications GmbH
Suedwestpark 94
D-90449 Nuremberg

Phone: +49 - 911 - 96 73-0
Fax: +49 - 911 - 6 88 07 25

e-mail: info@funkwerk-ec.com
Internet: www.funkwerk-ec.com